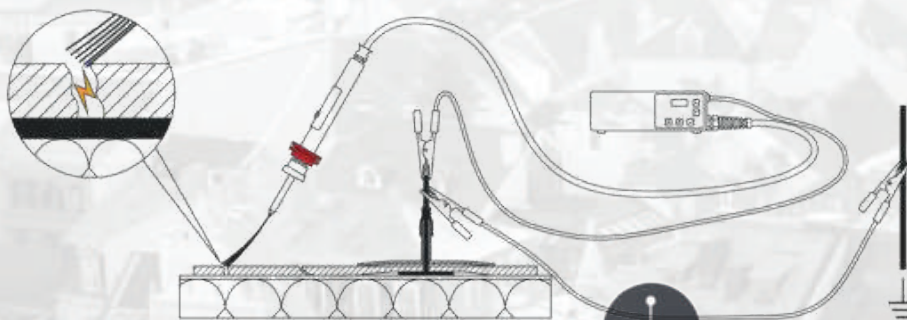




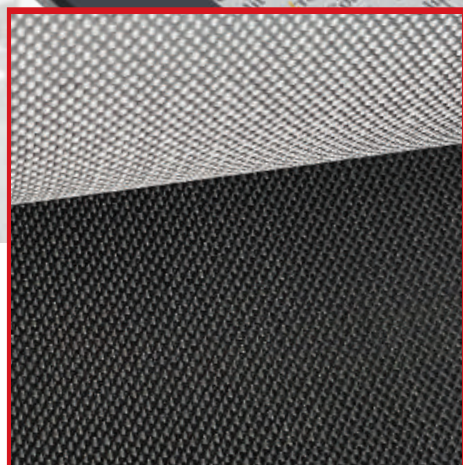
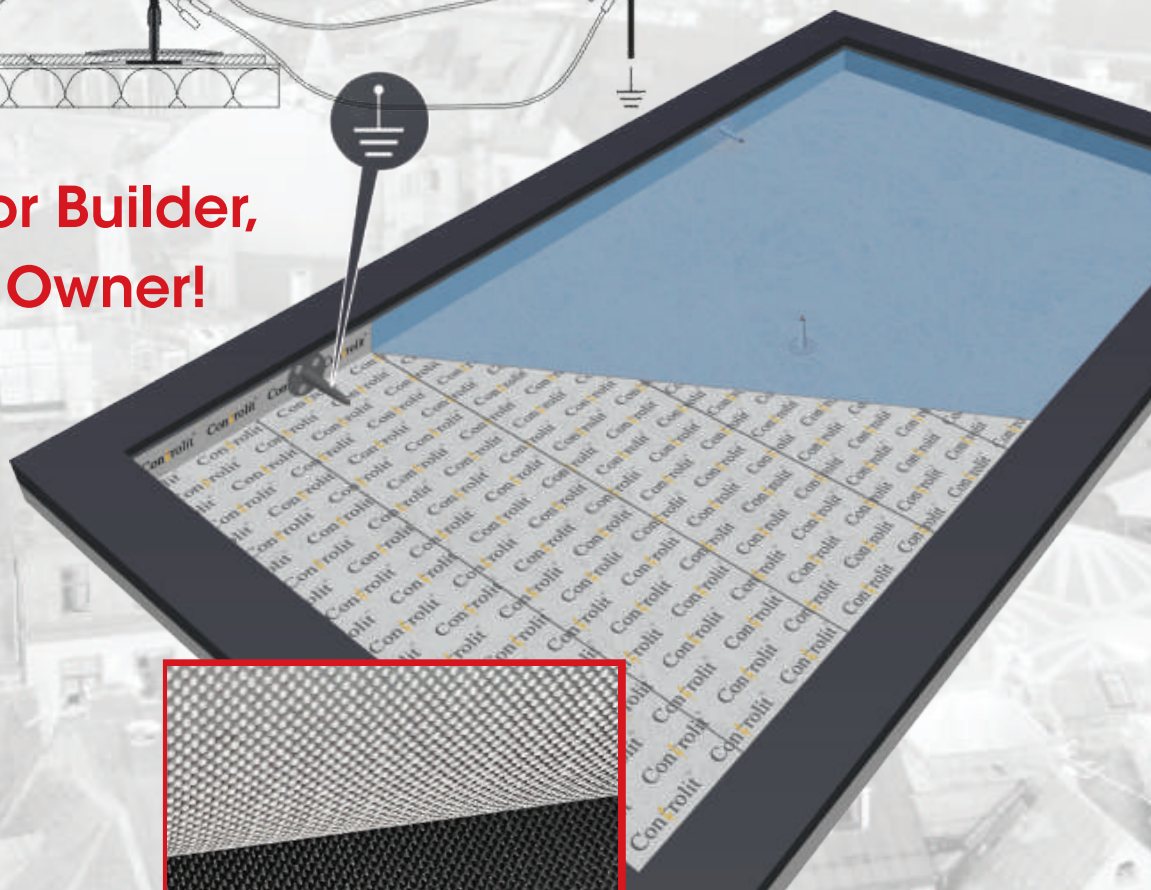
Controlit® GS

Technical Data Sheet

Single Ply



**Support for Builder,
Safety for Owner!**



Roof And Other Waterproofing Inspection

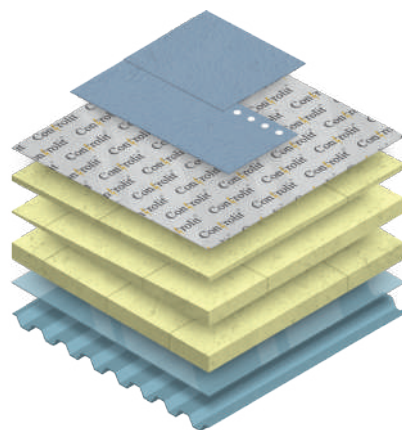
For mechanically fixed and not fixed thermoplastic single ply waterproofing membrane (PVC & TPO)



We protect what matters most™

ABOUT CONTROLIT® GS

Controlit GS is electrically conductive underlay, which is meant to be installed in the whole area right under mechanically fixed and not fixed thermoplastic single ply waterproofing membrane (PVC&TPO). It is long lasting, strong and non-flammable material, which provides the possibility to carry out waterproofing inspections by electronic leak detection methods.



TECHNICAL SPECIFICATIONS			
PROPERTIES	TEST METHOD	UNIT	SPECIFICATION
Basic material	–	–	Glass fiber fabrics Type E
Weave	–	–	Plain
Yarn tex	DIN EN 12654	–	Sized warp EC 9-68 Z 20, weft EC 9-68 Z 20
Cover	–	–	Stainless steel
Electric resistance	Individual value	Ohm/sq	<1000
Fabric weight	DIN EN 12127	g/m ²	165 +/-10
L.O.I.	DIN ISO 1887	%	8.0-11.0
Thickness	DIN EN ISO 5084	mm	0,16 +/-0,02
Tensile strength min	EN ISO 13934 1	N/5 cm	warp 2500 weft 2000
Colour	–	–	Black, dark grey
Width	Individual value	mm	1650
Material length in roll	Individual value, max	m	50
Edges	–	–	Feathered
Core tubes	–	mm	76
Material on EURO pallet	Individual value	m ²	3300



bmigroup.com/my

BMI ROOFING SYSTEMS SDN. BHD.

Registration No.197401002179 (19163-M)
 (Formerly known as Monier Malaysia Sdn. Bhd.)
 Suite 11.02, 11th Floor, Menara JKG,
 No. 282, Jalan Raja Laut, 50350 Kuala Lumpur, Malaysia
 T (+60) (3) 21760600 Toll Free: 1800 88 0865
roofing-malaysia@bmigroup.com