

MONIER

V-Pipe Set



Part of **BMI**

Monier V-Pipe Set, Leak-Proof Solution for Ventilation Pipe Outlets

V-PIPE is a dry fix roof outlet solution that consists of a special roof tile, flexible link hose, rubber wedges and cable ties. The watertight sleeve may be cut into desired size to fit the vent pipe perfectly, resulting in leak-proof and aesthetic beauty compared to metal flashing.



WATER-TIGHT PERFORMANCE

- Complete peace of mind
- Perfect fit with roof tiles ensuring water-tightness



AESTHETIC

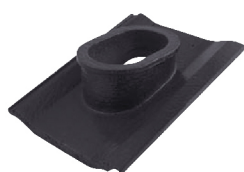
- Uniform outlook
- Precise match with all Monier roof tiles profiles
- More beautiful and enduring compared to traditional metal flashing



FLEXIBILITY

- Wide choice of sizes for vent-pipe

CONCRETE V-PIPE SET



1 V-Pipe Tile of Relevant Shape

+



1 Elastomer Sleeve

+



2 Rubber Wedges

+



2 Cable Ties

+



1 Flexible LINK-Hose (Length - 1 Metre)

PRODUCT & TECHNICAL DATA

Material (Tile) Concrete roof tile with EPDM (Ethylene Propylene Diene Monomer) sleeve

Maximum Vent Pipe Size 110mm outer diameter

Recommended Specifications Monier V-Pipe set is a dry fix roof outlet solution to suit Monier roof tile profiles / roof system ** (in colour***) complete with Monier elastomer sleeve, Monier rubber wedge, Monier cable tie and Monier flexible link hose to be installed in accordance with Monier recommended installation method.

**select roof tile profiles / roof system (Legacy®, Perspective®, Contour®, Nordica®, Elabana®)

***please specify colour as per colour chart for each tile profiles

In view of innovation, the specifications are subject to change without any prior notice and in the event of such changes, Monier shall ensure that the new specifications are equivalent if not better.

CLAY V-PIPE SET



1 V-Pipe Tile

+



1 Lantern Cap

+



1 Elastomer Sleeve

PRODUCT & TECHNICAL DATA

Material (Tile)	Clay roof tile
Maximum Vent Pipe Size	110mm outer diameter
Recommended Specifications	Monier V-Pipe set is a dry fix roof outlet solution to suit Monier roof tile profiles / roof system ** (in colour***) tile and to be installed in accordance with Monier recommended installation method.

**select roof tile profiles / roof system (S-Pantile & Toscana® Warisan)

***please specify colour as per colour chart for each tile profiles

In view of innovation, the specifications are subject to change without any prior notice and in the event of such changes, Monier shall ensure that the new specifications are equivalent if not better.

BMI LEAK-PROOF COMPONENTS



V-Pipe Set

- Dry Fix solution for ventilation pipe outlet
- High aesthetics value
- Enhance the overall roof water-tightness



Abutment

- Waterproofing dry fix solution for wall flashing
- High aesthetics value
- Long-lasting and durable



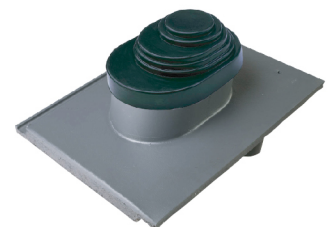
Ridge & Hip

- Ventilated Dry Fix solution for ridge and hip
- High ventilation value
- Long-lasting watertight solution



Solar Fitting Kit

- Required with Solar Water Heating System
- Solar Fitting kit for a watertight hot and cold water pipe inlets and outlets
- Clean, neat and long lasting



MONIER



CALL US NOW

1800 88 0865



bmigroup.com/my

BMI ROOFING SYSTEMS SDN. BHD. (BRSSB) reserved the right to change the contents of this document without any prior notice. Printed: 11/2025 © BRSSB
Edition 2025 / V1



Scan QR Code for BMI Malaysia



Scan QR Code for Showroom & Sales office location

BMI ROOFING SYSTEMS SDN. BHD.

Registration No.197401002179 (19163-M)
(Formerly known as Monier Malaysia Sdn. Bhd.)
Suite 11.02, 11th Floor, Menara JKG,
No. 282, Jalan Raja Laut,
50350 Kuala Lumpur, Malaysia
T (+60) (3) 21760600
roofing-malaysia@bmigroup.com

ABOUT BMI GROUP

BMI Group was born out of a recognition that customers now expect a single point of expertise to help them find their ideal roof. Bringing together some of the industries most trusted brands to become the largest supplier of both flat and pitched roofing and waterproofing solutions throughout Europe, BMI Group has over 173 years of experience and innovation to offer its clients.

As a **Standard Industries** company, BMI Group, headquartered in London, has the support, reach and resources of a global enterprise. With over 120 production facilities across Europe, Africa and Asia, and more than 9,500 employees worldwide, the business is well positioned to provide an unparalleled level of service to homeowners, specifiers, contractors, property owners and developers.

Find out more at www.bmigroup.com

